



Marc Palahí,
Assistant Director in Policy Support
European Forest Institute

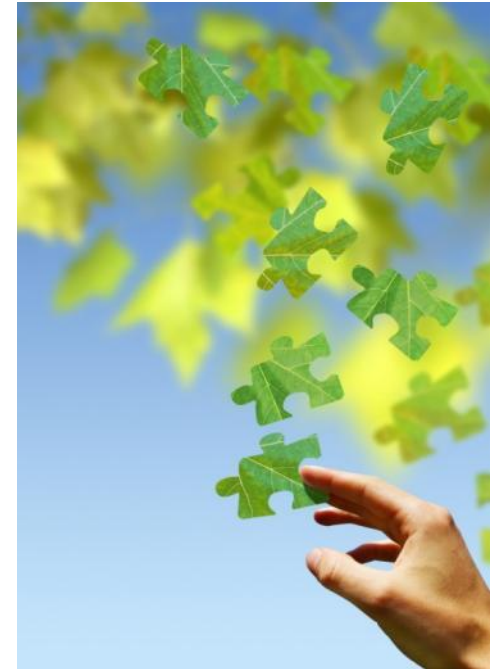
ThinkForest

A European high-level forum on the future of forests

Tours, 23 May 2012

A rapidly changing world

- New **challenges** in meeting the **multifunctional** demands on forests and **sustainable** forest management
- **Adapt our forests and the forest sector to deliver products and services with the highest value**
- **Coordinated efforts** from all stakeholders within and outside the sector
- **Integrated political approaches**
- **Scientific knowledge as basis for policy making**



ThinkForest:

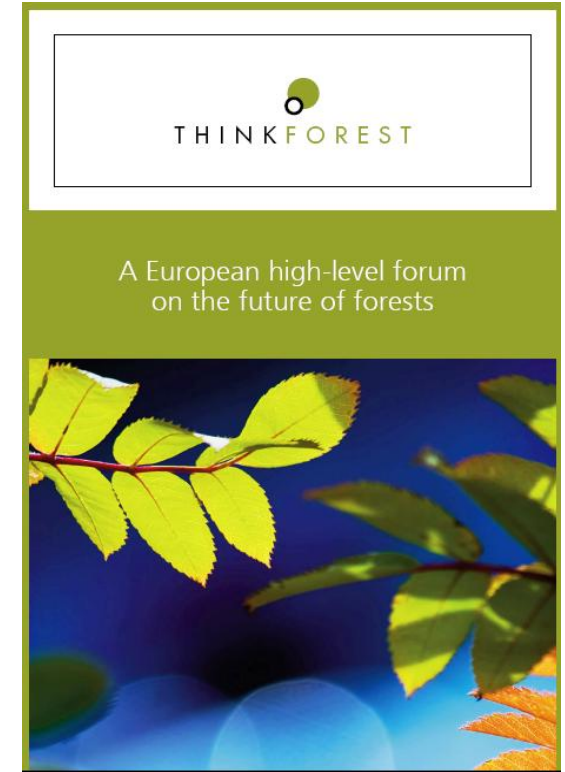
A high-level science-policy forum

- **Support free discussions** on strategic forest issues
- **Build a common understanding** of cross-sectoral forest issues: opportunities and challenges
- Help policy makers **navigate the sea of information**



Information sharing and communication

- Identifying **policy** issues which require specific **information needs**
- Providing to policy-makers with **best available knowledge** for informed decision making
- **Conferences, targeted events, field discussions**
- **Working groups, scientific reviews and studies**
- **An Advisory Board**



Expected impacts



- A **fluent dialogue** between scientific community, policy makers and stakeholders
- Better **informed policy makers** regarding cross sectorial forests issues
- Improved **policy consistency** regarding forest issues

Launch event: 15 May 2012 : Towards a green bio-economy: Unlocking the potential of Europe's forests



Thinkforest launch event 15 May 2012;

Janez Potočnik, Commissioner for Environment of the
European Commission:

“To maximize the contribution of forests and forestry to the bio-economy, we need to use these resources for products with high added value, and we need to produce these resources without endangering the many other benefits that forests currently provide for the environment and for society.”

Thank you

- For more information: Marc.palahi@efi.int