

Why foresters not adapt their forests to climate change when they know its impacts?

Project “Adaptation measures to climate change by foresters” in France

Julie Thomas, Annabelle Amm

XXV IUFRO World Congress 2019
"Forest Research and Cooperation for Sustainable Development"



Bureau
d'économie
théorique
et appliquée
(BETA)
UMR 7522



INRA
SCIENCE & IMPACT



Partners :

Managers of private forest :



Managers of state, regional and communal forest :



Research partners :

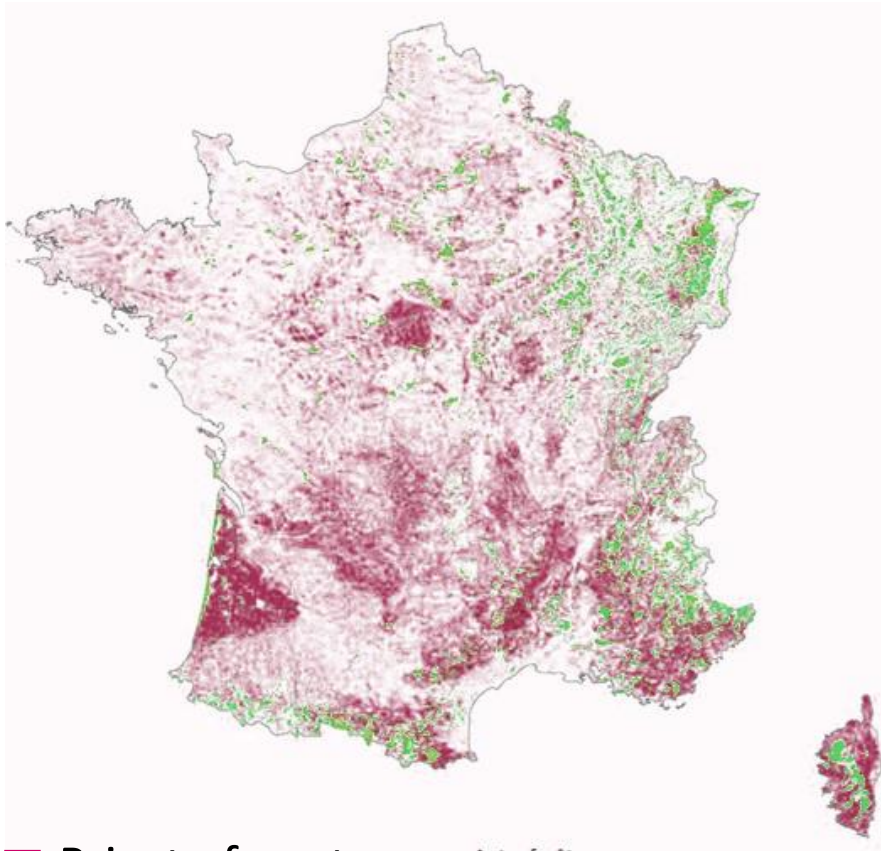


Purposes :

- To increase knowledge about **climate change awareness by foresters (private forest owners, Public and private managers);**
- Identify the obstacles to adapt forest to climate change.

Key figures of French forest

75 % of its forest is privately owned

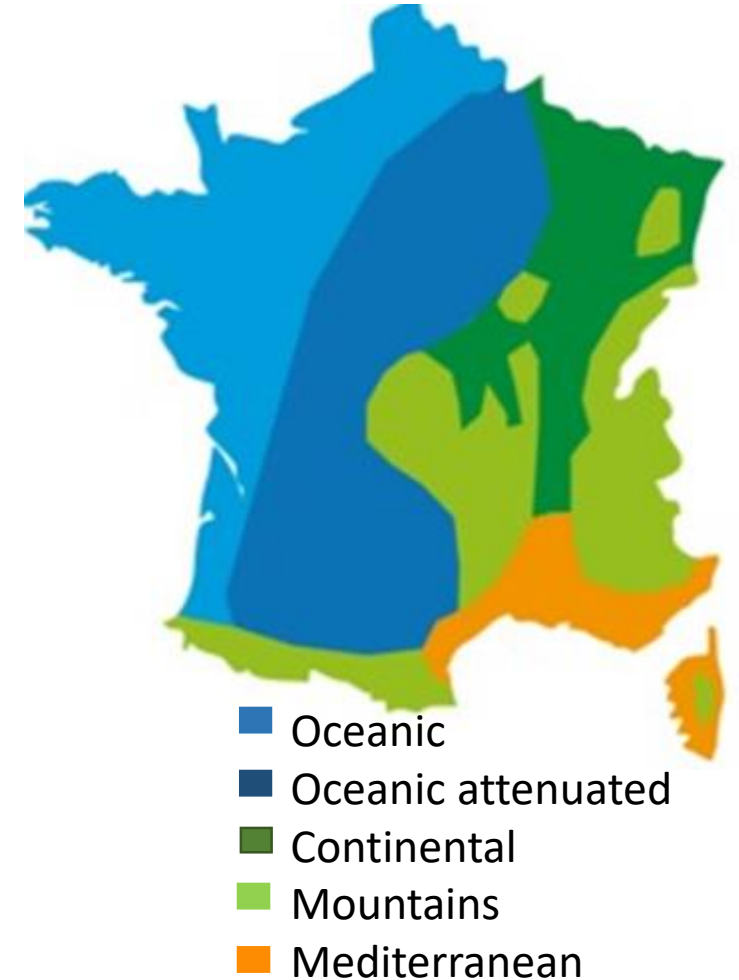


■ Private forest
■ Public forest

- 16.9 millions Ha
(4th in Europe)

- 3.5 million private
forest owners

Various climates in France



There are already impacts of climate change in forest

Methodology

- Phone Survey (960 Private Forest Owners)
- Online Survey (922 public and private managers)
- Face-to-Face interviews (public and private managers)
- Document analysis (1400 approximately)

The survey was conducted with stratified random sampling according :

- 8 regions.
- 5 size of forest properties

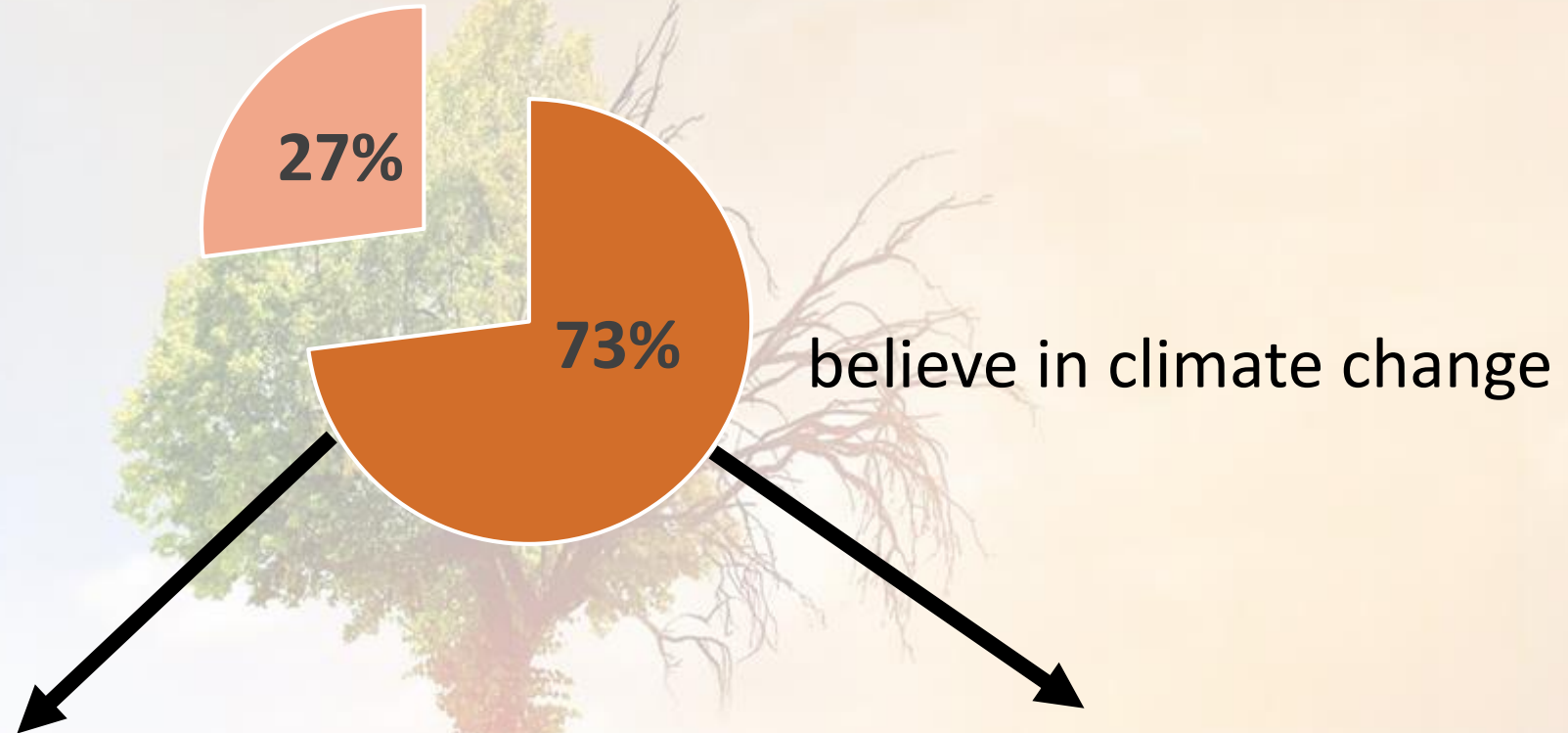
**< 4 ha; 4 - <10 ha; 10 - < 25 ha; 25 - < 100 ha;
100 ha and more.**

Statistical treatment (In process)



Perception of Climate Change by Non Industrial Private Forest Owners (NIPFO)

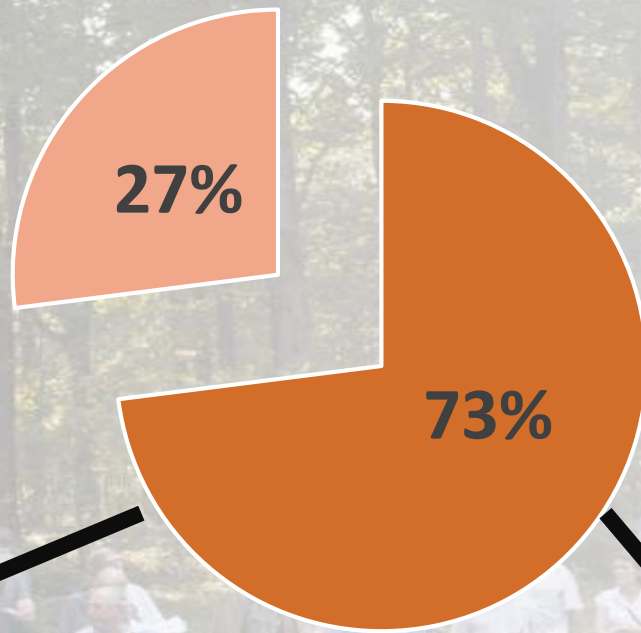
Question : Do you think the climate is changing ?



85 % of them think that climate change depends on human action

78 % of them think that climate change will impact their forest





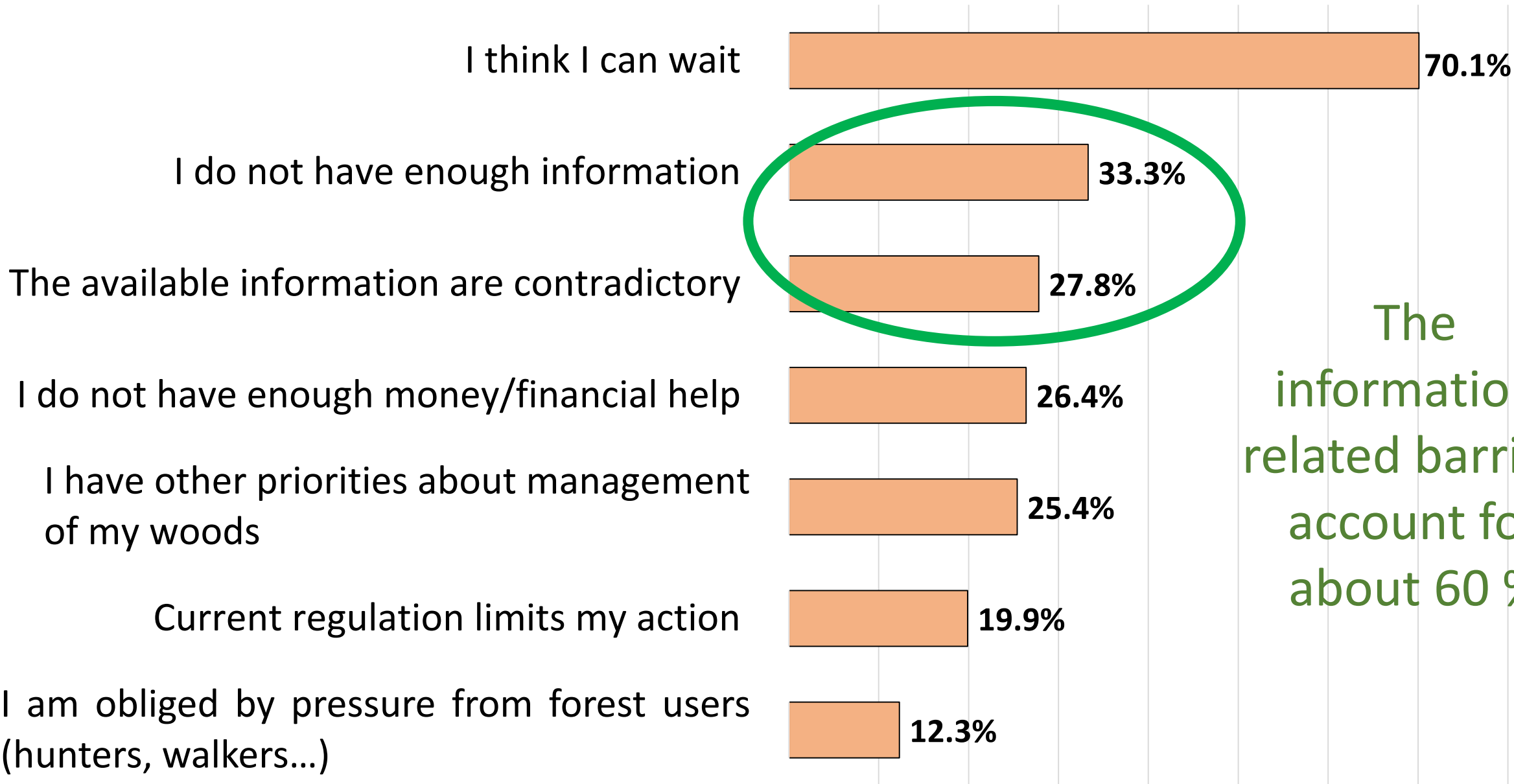
33 % of them are worried about climate change

24 % of them have changed or will change their silvicultural practices for climate change.

Why only 24 % ?

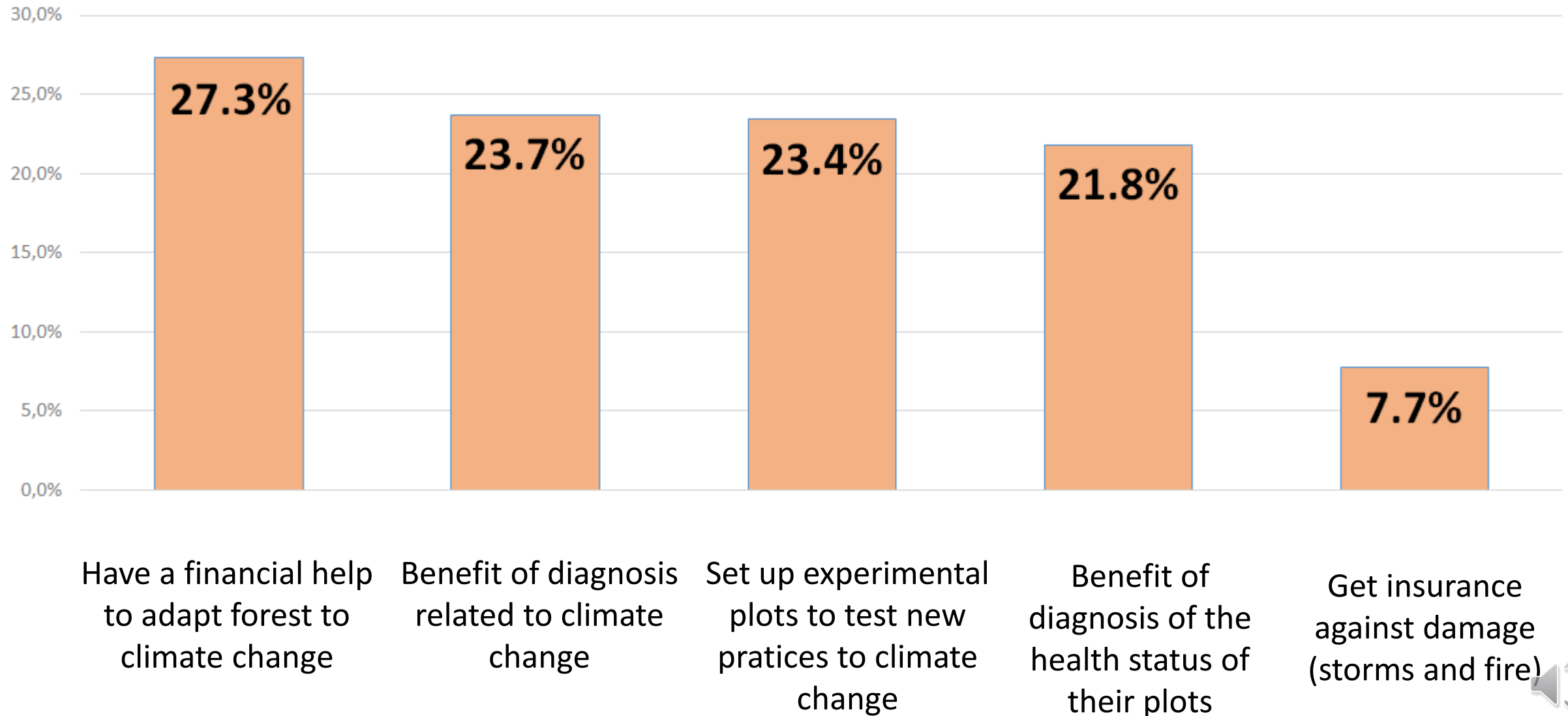


Question : Why do not you plan to change your forest management practices in the next 5 years? *% answers YES (several answers possible)*



Question :

What would encourage you to change your practices? % answers YES (several answers possible)



Question :

What would encourage you to change your practices? % answers YES (several answers possible)

30,0%

- **35% of the owners who do not intend to change their practices in the next 5 years, are not interested in the previous proposal.**
- This may mean : **Our proposals are not sufficiently varied or/and these forest owners do not identify with our speeches.**

0,0%

Have a financial help
to adapt forest to
climate change

Benefit of diagnosis
related to climate
change

Set up experimental
plots to test new
practices to climate
change

Benefit of
diagnosis of the
health status of
their plots

Get insurance
against damage
(storms and fire)



Short analysis of these data :

- NIPFO who think they can wait find that the **information** is **not enough** or/and **contradictory**, and are limited by available **money** and by **regulations**.
- There is **too much uncertainty**. No **real proposal to promote their action**.
- Forest owners' affective links and their high environmental concern to their forests do not result in changes of silvicultural practices.



Some conclusions :

- Only **10% of the NIPFO surveyed believe in climate change and act.**
- To get them to action, we need clear practical propositions and their follow-up over time by specialists.
- Managers of private forests say also that they meet very often limitations in available **money and in needed time. They depend on the will of the forest owners ; initial cost of implementation are high ; risk of failure are costly.**
- The managers need more time to implement new practices and experiments, to follow them over time. They need more time to learn about climate change and inform forest owners.



So...

- We have to know the needs of forest managers in order to provide practical and adapted information at least consistent with the economic and time issues. **(In process)**

Thank you for your attention

Julie Thomas
julie.thomas@cnpf.fr
julie.thomas@inra.fr

